



## TWIN TRANSITION

la grande sfida della rigenerazione del patrimonio edilizio  
esistente e storico





2020\_ CAMPUS SALVAGNINI



SOMEWHERE IN  
THE VENETO  
COUNTRYSIDE...





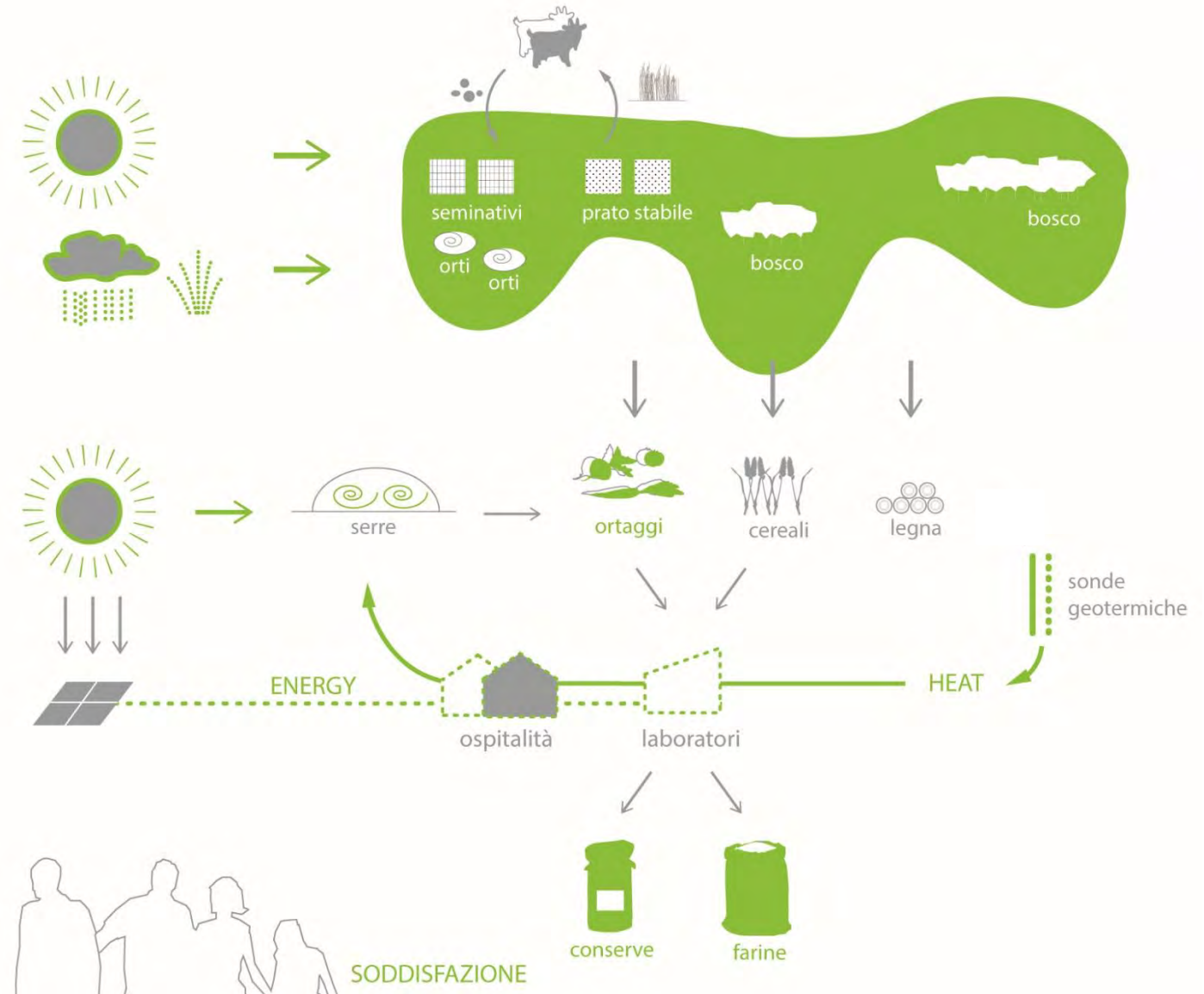
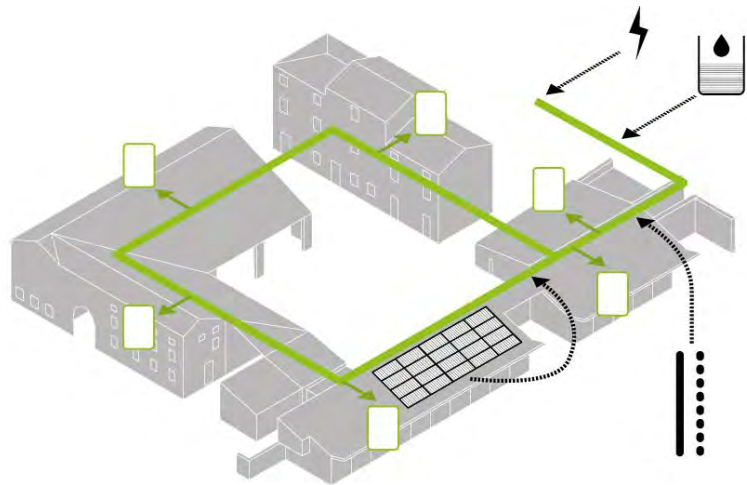


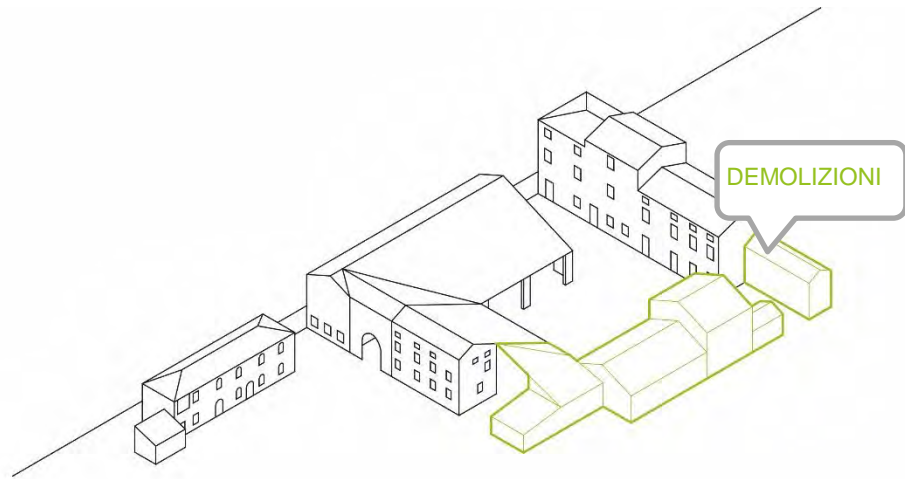




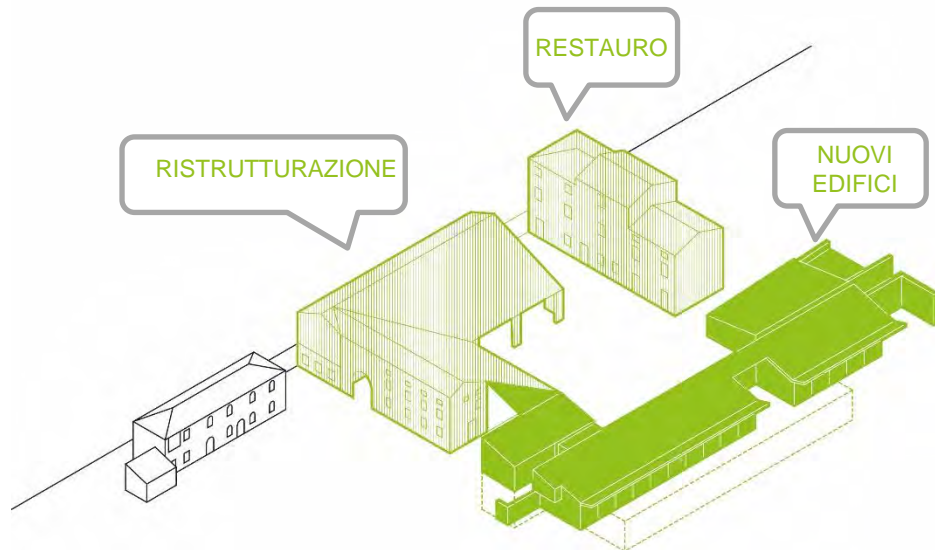
## ecologies/ zero energy

The roof covering is shaped to control natural light and maximize its photovoltaic potential: it produces 60 KW of energy, enough to support the court's agricultural activities and a heat pump air conditioning and heating system for the buildings, all linked by a geothermic ring

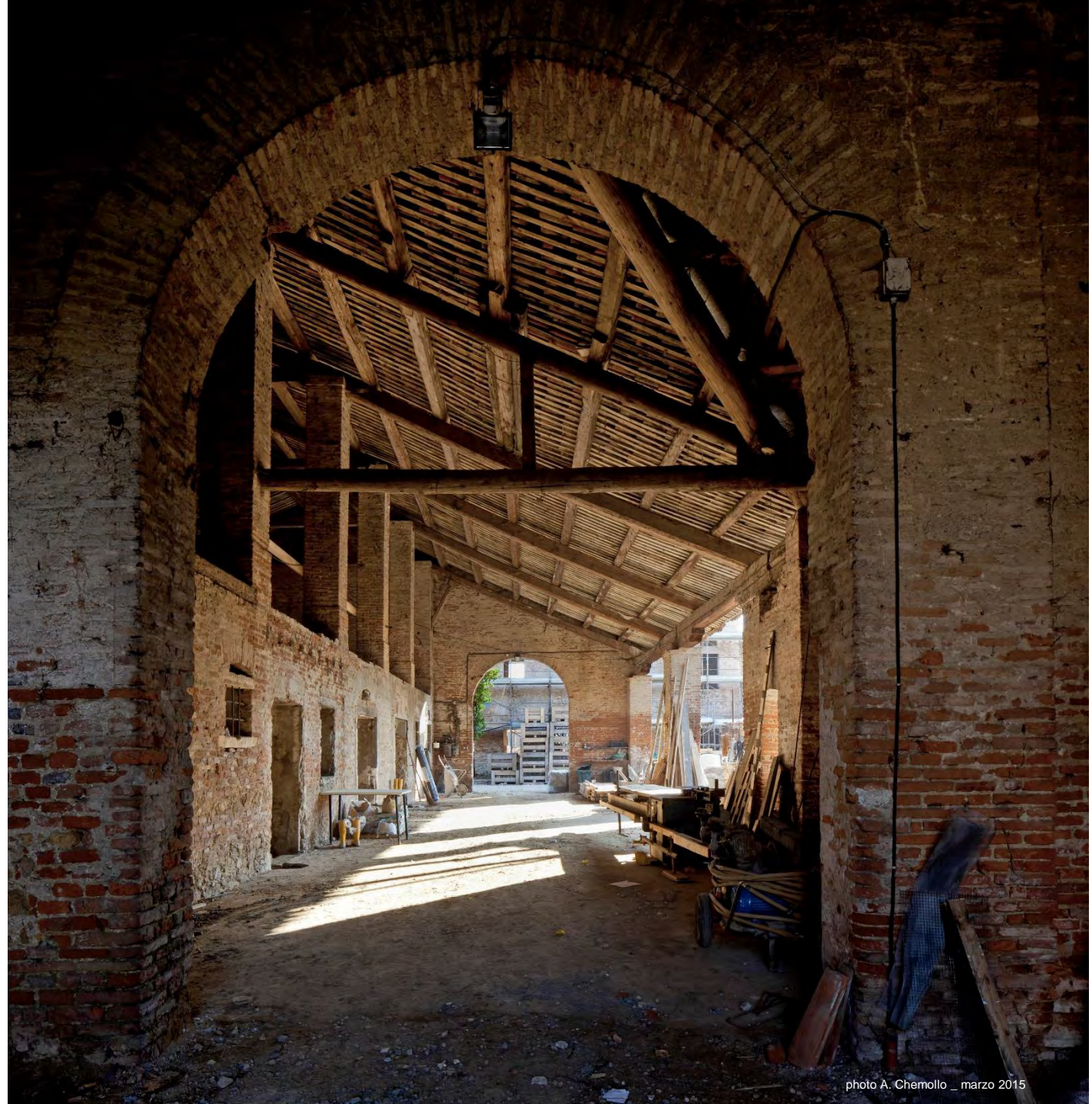




STATO DI FATTO

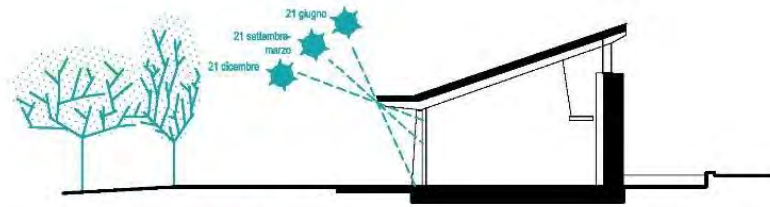


INTERVENTI

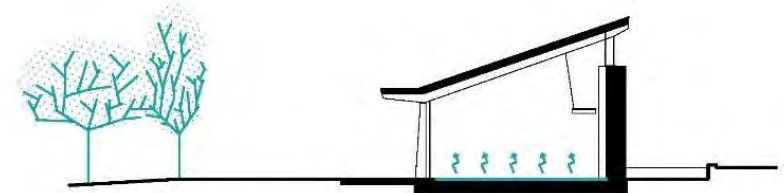








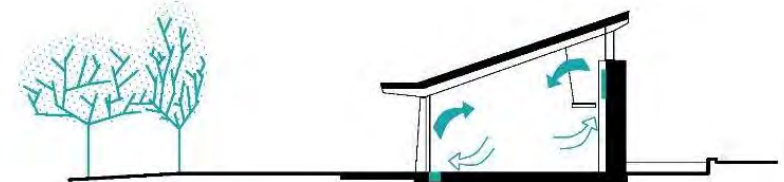
SUN PENETRATION



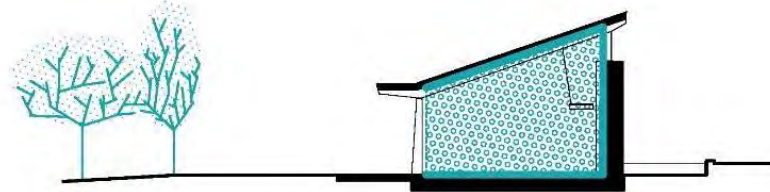
FLOOR HEATING



NATURAL VENTILATION



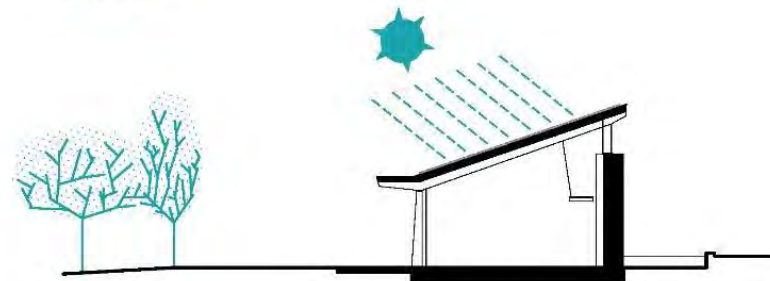
AIR COOLING



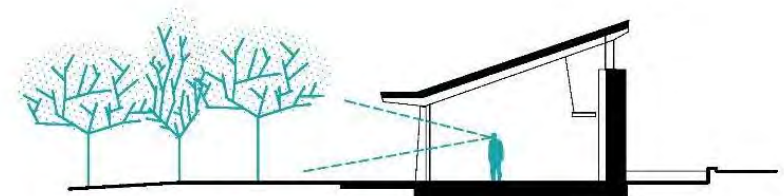
INSULATION



LIGHTING

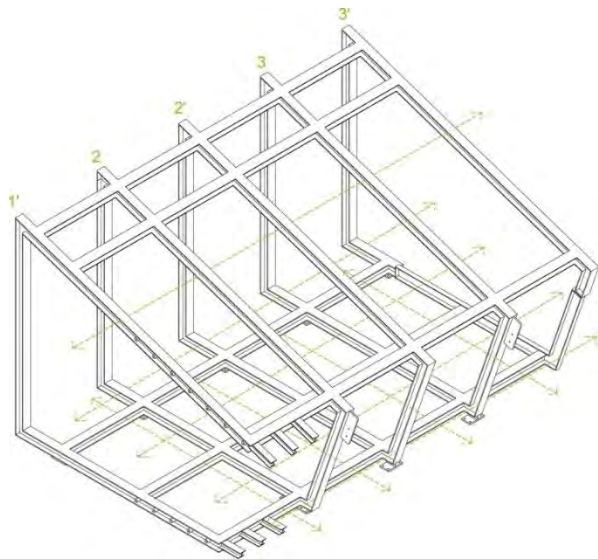
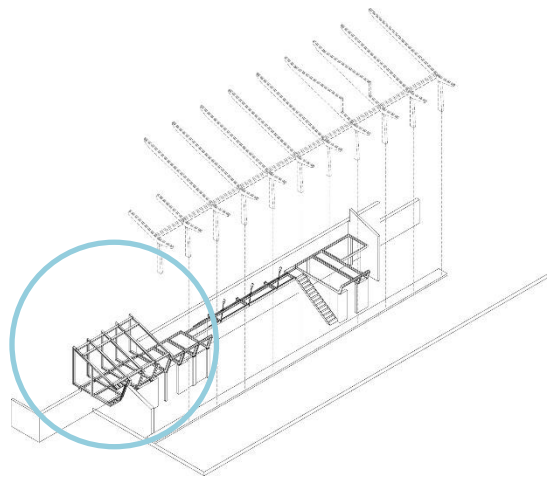


SUN ENERGY



LANDSCAPE VIEW





[www.traverso-vighy.com](http://www.traverso-vighy.com)